

Non-Display IP Phones (ITL-2E)



If you wish to pre-configure the non-display 2 button IP Phone you must first assign it an IP Address so that the phone can be configured through a browser. To do this you will need a simple DHCP application running on your PC to provide this address. This example shows Tftpd32 which is freeware available at <http://tftpd32.jounin.net>. You will also need an isolated switch to connect you PC and IP Phones to (switch will need to support POE or a power pack or an in-line power adapter will be needed for the IP Phone).

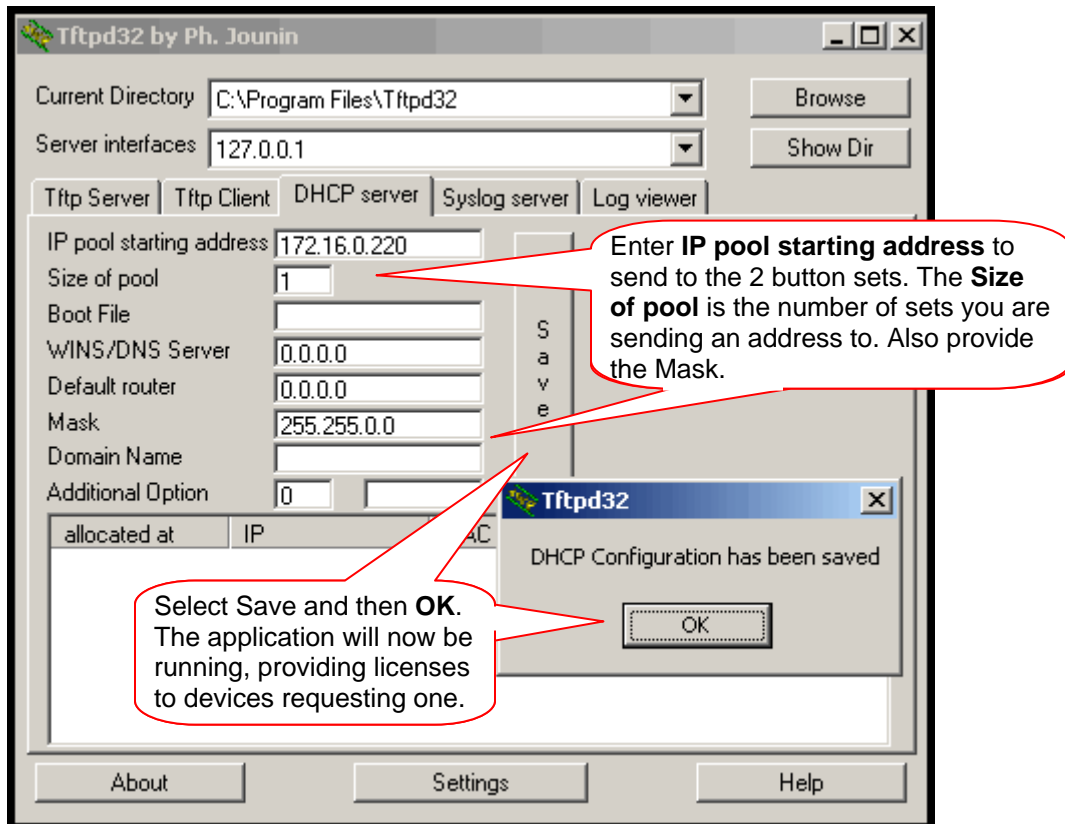


First remove your pc from any network connection and assign a static IP address.

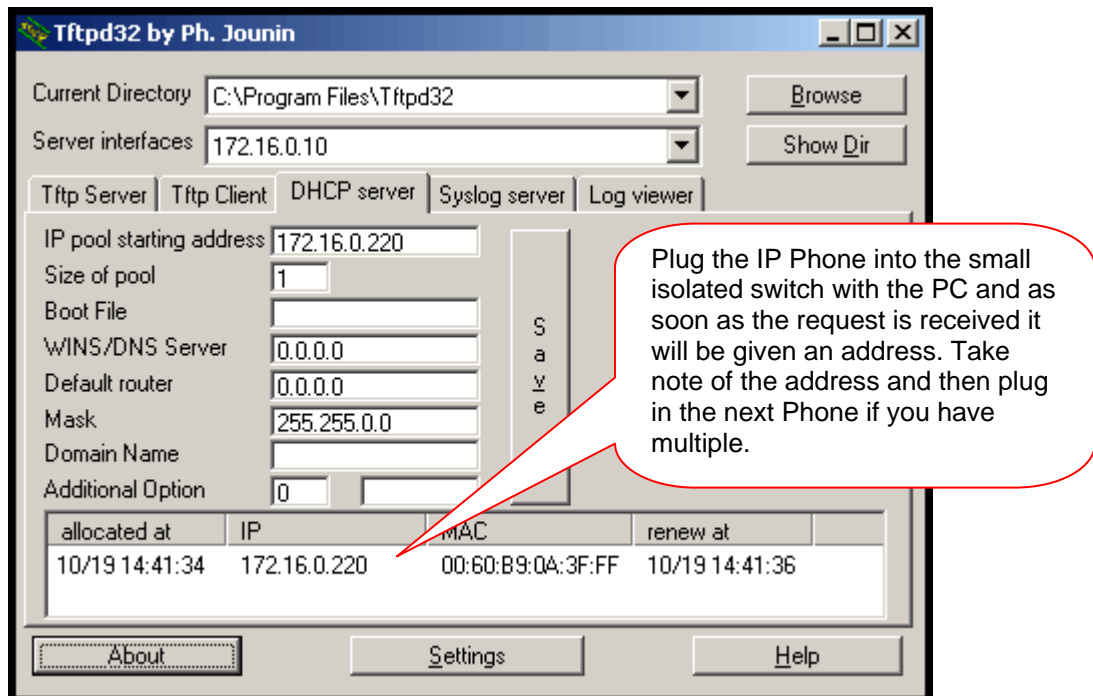
In Windows XP go to **Start, Settings, Control Panel, Network Connections**, and double click the **Local Area Connection** (with no network connection there will be a red X on this NIC) then select the **Properties** button.

The screenshot shows two windows. The top window is 'Local Area Connection Properties' with the 'General' tab selected. Under 'This connection uses the following items:', 'Internet Protocol (TCP/IP)' is highlighted with a blue circle containing the number 2. A red callout bubble points to this item with the text: 'Under the general tab scroll down to **Internet Protocol (TCP/IP)**. Highlight this and then select **Properties**.' The bottom window is 'Internet Protocol (TCP/IP) Properties' with the 'General' tab selected. The 'Use the following IP address:' radio button is selected. The IP address field contains '172 . 16 . 0 . 10', the subnet mask field contains '255 . 255 . 0 . 0', and the default gateway field is empty. A blue circle containing the number 3 is around the IP address field. A red callout bubble points to this field with the text: 'Enter a new static address and click **Ok**.'

- 4 Start the Tftpd32 application.



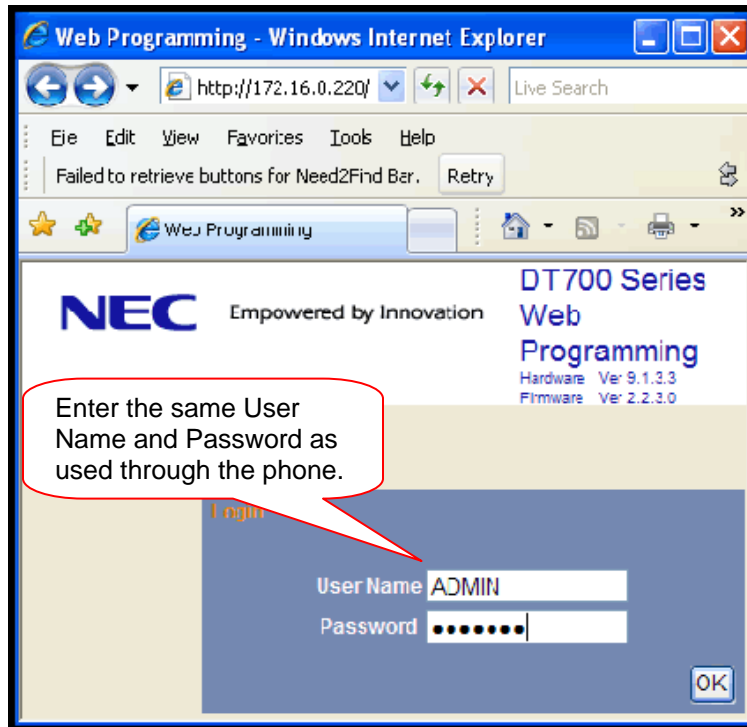
5



Note: Windows Firewall or other 3rd party firewall software running on the PC may have to be disabled.

5

Open a browser window and type in the IP address given to the IP Phone in step 5.



6

