



SIP DECT Wireless



Some requirements that **MUST** be met before starting installation of this application.....

- Laptop with **IP-DECT Configurator** loaded. Pc must be **WIN 2000 (with SP4), WIN 2000/2003 Server, or WIN XP (SP2)**. Windows PC **MUST** have **IIS** loaded in the Windows components.
- Each DECT handset uses one "**IP Terminal Advanced**" license loaded to the CP00. Confirm # of licenses by going to **CM 10-50-01** through telephone programming and enter license code **5111**.
- One **PARI** code is required for each location where the DAP's are located. The **PARI** code is the license code for the DAP controller. Even if the multiple sites are all connecting back to the same SV8100 CP00 there is still a unique **PARI** code required for each physical location. **The PARI** code is printed on the **NEC DECT Network Security License CD**. NEC part number 750898. One PARI code per CD.
- Obtain from the customer one static IP address for each DAP to be installed on the customer network. One DAP controls up to 25 handsets.
- The initial configuration **should** be setup on a **closed network**. That is the SV8100 connected to a Ethernet switch along with the PC with the DAP Configurator and the DAPs themselves **ONLY!** It is recommended to set this up on your bench and test before going to site to install.

1.

10-12: CD-CP00 Network Setup

01 - IP Address

02 - Subnet Mask

03 - Default Gateway

09 - IPLA IP Address

10 - IPLA Subnet Mask

Assign the IP addressing for the CPU. As with other VOIP applications on the **SV8100**, the address assigned the IPLA **MUST** have the first 2 octets different from the address in **CM 10-12-09**.

2.

Assign the stations for the wireless handsets. These stations **MUST** be assigned to ports with **NO** hardware assigned.

NOTE: If there an **ME-50** board on the CP00 the stations can be assigned to any non-equipment port. If there is no **ME-50** the stations **MUST** be assigned below port 64 and on a non-equipment port.

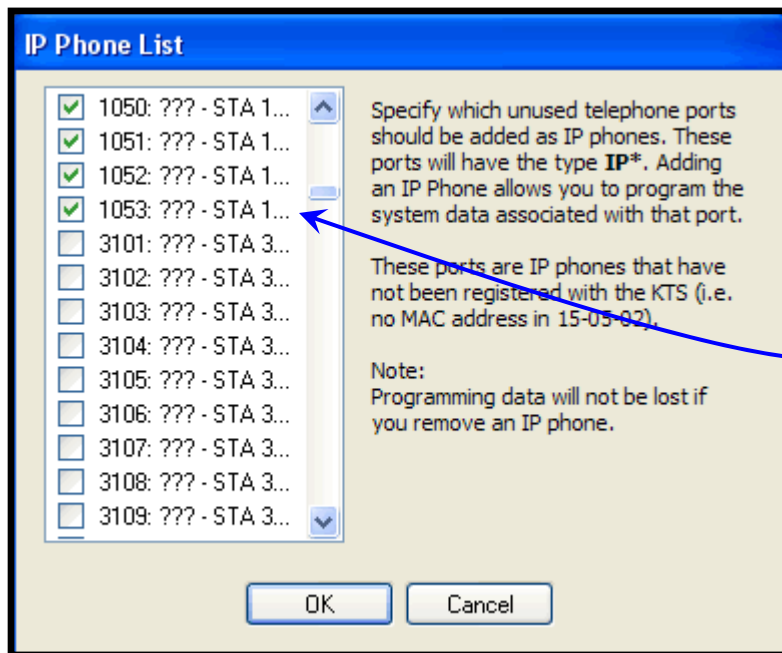
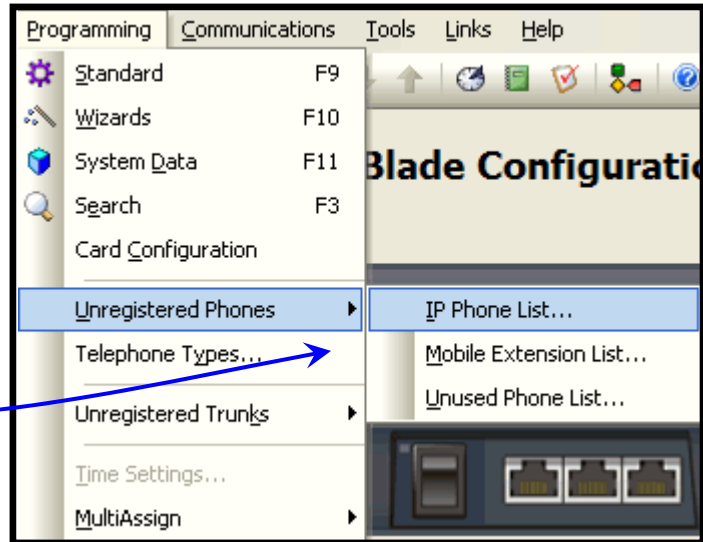
11-02: Extension Numbering

Station Port (1~512)

Station Port	Extension
048	<input type="text" value="1050"/>
049	<input type="text" value="1051"/>
050	<input type="text" value="1052"/>
051	<input type="text" value="1053"/>

3.

In Pc-Pro select **Programming**, **Unregistered Phones**, then **IP Phone List...**

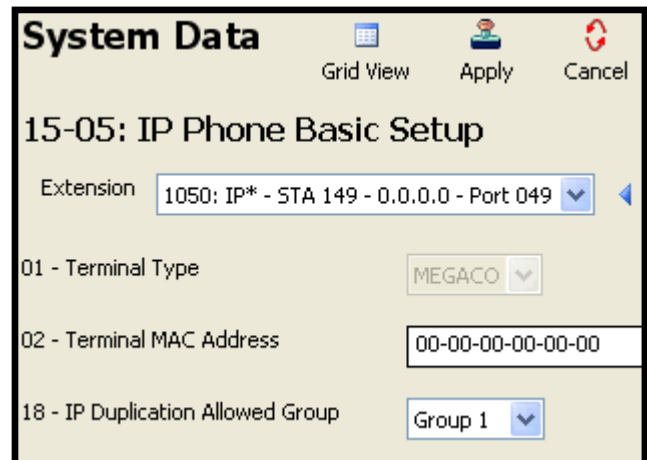


4.

Scroll until you find your **SIP DECT** stations assigned in step 2. and check each one of them.

5.

Go to **CM 15-05-18** and place each of the SIP DECT stations in a **Duplication Allowed Group**. **Note:** Each SIP DECT station registering to a DAP must be in the same group. Each DAP can register up to 25 SIP DECT stations.



6. Open the DECT Configurator and click the **New System** button.

General Settings :

System Name : Barry Mundy

System Type : IPK II

AP200 package : 4910b

Select file AP200 download filename

Look in: My System

- epm data
- PM
- upm data
- 4910b404.dwl
- 4910b405.dwl

My Recent Documents

Desktop

My Documents

Do not change the **Multicast address** and select the **This PC IP** button and enter the **CPU IP address** from **CM 10-12-09**. Leave the **Registration Port** at **5070**.

Type a System Name for the customer site and click **Browse** to locate the latest Wireless DECT firmware file. Contact the NTAC for the latest version of this file. Finally click the **Apply** button at the bottom of the screen.

7. Select the **IP Settings** button.

IP Settings :

Multicast address : 239.192.49.172

Port range from : 3000 to 22229

DC IP address : 10.10.10.226

Port range from : 28000 to 28009

CPU IP address : 10.10.10.100

Registration Port : 5070

Default MCA

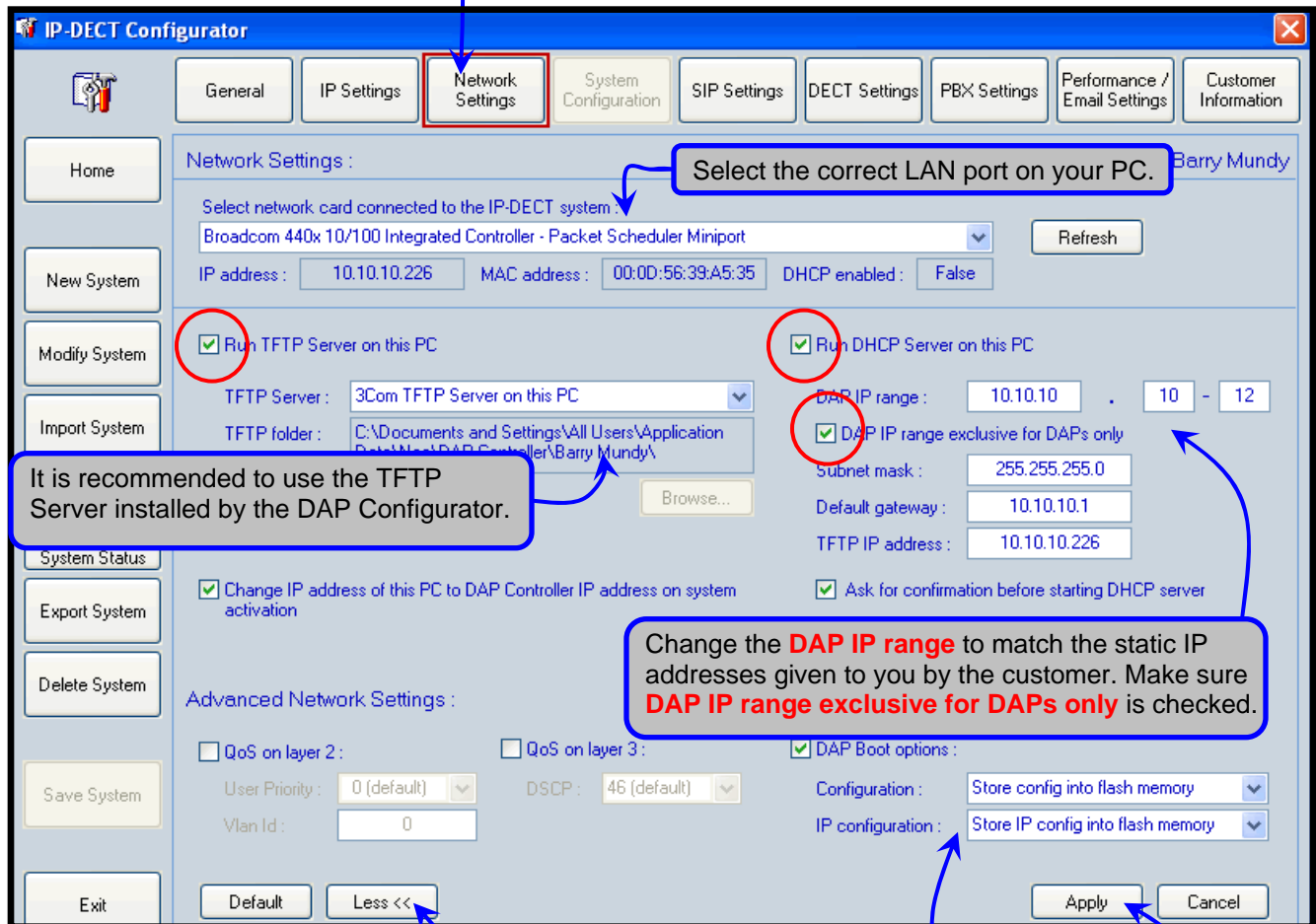
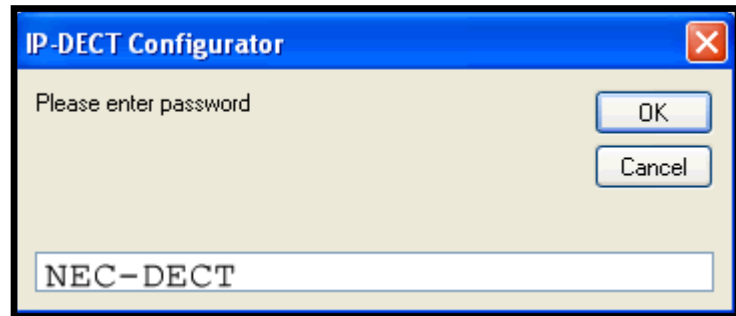
This PC IP

Do not change the **Multicast address** and select the **This PC IP** button and enter the **CPU IP address** from **CM 10-12-09**. Leave the **Registration Port** at **5070**.

Re-confirm settings are correct and click the **Apply** button at the bottom of the screen.

8.

Select the **Network Settings** button and then enter the password **NEC-DECT**.



Select the correct LAN port on your PC.

It is recommended to use the TFTP Server installed by the DAP Configurator.

Change the **DAP IP range** to match the static IP addresses given to you by the customer. Make sure **DAP IP range exclusive for DAPs only** is checked.

If you do not see the **Advanced Network Settings** on your screen select the **More >>** button at the bottom of the page.

Make sure the **DAP Boot options** are both set to **Store**. If set to **Erase** your config and settings will all be lost once the DAP is unplugged.

Click Apply when done.

9.

Select the **SIP Settings** button.

The screenshot shows the IP-DECT Configurator interface with the 'SIP Settings' tab selected. A callout box points to the 'SIP Settings' button in the top navigation bar. Another callout points to the 'Advanced SIP Settings' section, which includes fields for 'SIP Domain' and 'Registrar IP address' (set to 10.10.10.100). A third callout points to a 'More >>' button at the bottom of the page. A pop-up dialog box is open, asking 'Use mwi_support? (support of MWI)' with a default value of 'no'. The dialog has 'Yes', 'No', and 'Cancel' buttons. A fourth callout points to the 'mwi_support=no' checkbox in the configuration list, with the instruction to check it off. A fifth callout points to the 'Apply' button at the bottom right of the configuration area.

If you do not see the **Advanced SIP Settings** on your screen select the **More >>** button at the bottom of the page.

Check off **mwi_support=no** then select **Yes** in the pop up window.

Click **Apply** button when done.

10.

Select the **DECT Settings** button.

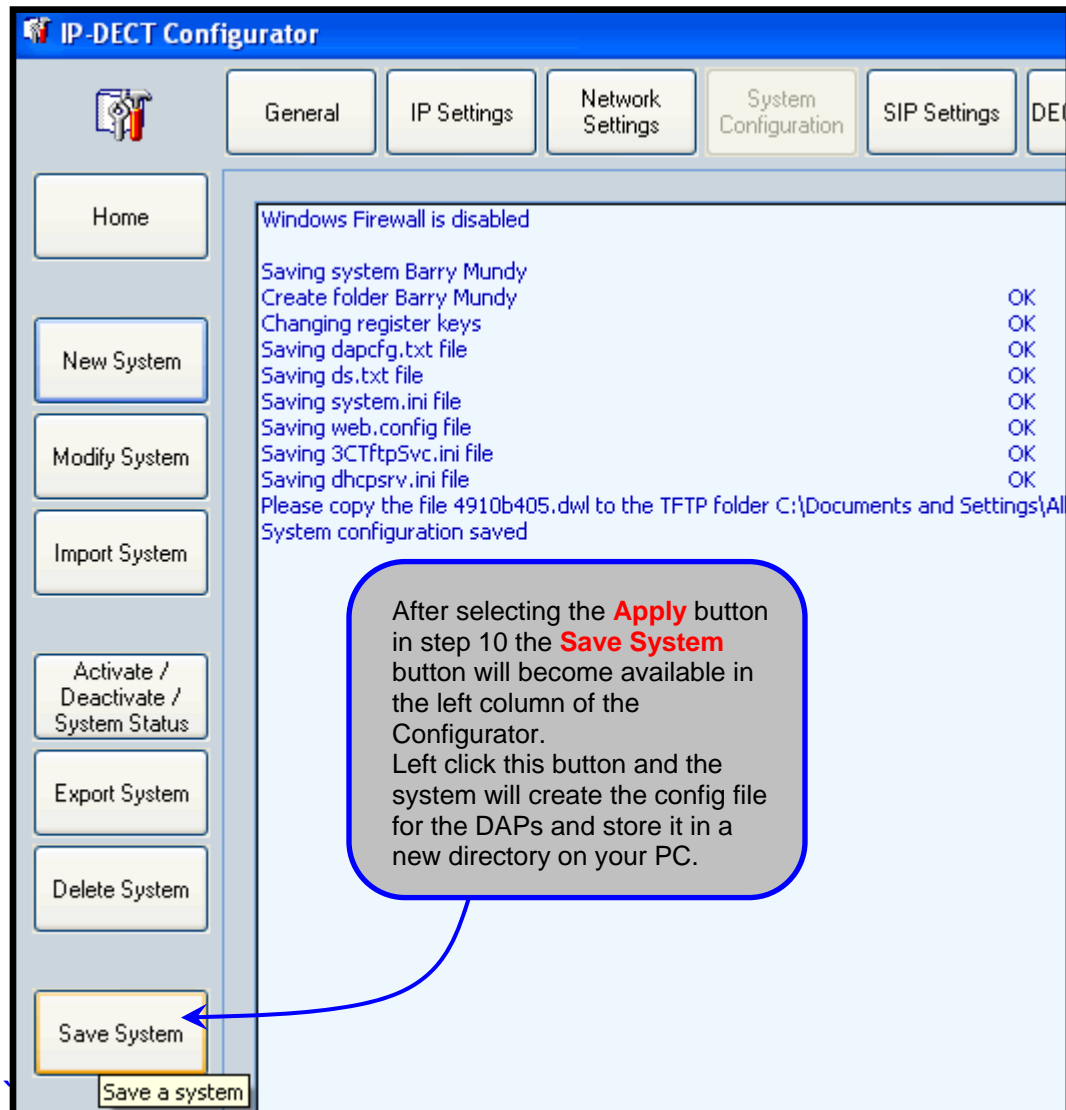
The screenshot shows the IP-DECT Configurator interface with the 'DECT Settings' tab selected. A callout box points to the 'DECT Settings' button in the top navigation bar. The 'DECT Settings' section includes a 'PARI' text field and a 'Country Code' dropdown menu set to 'US'. A callout points to the 'PARI' field with the instruction to enter the PARI code from the NEC DECT Network Security License CD. The 'Advanced Dect Settings' section includes a 'Use carriers' row with 10 checkboxes (0-9), where the first five (0-4) are checked. A callout points to these checkboxes with the instruction to place a green check in each of the 5 carrier boxes and change both the 'Page Timer' and 'Retry Value' to a setting of 03. The 'Page Timer' and 'Retry Value' dropdown menus are both set to 03. Other settings include 'Handset polling' (checked) and 'Send date ar' (checked).

Enter the PARI code from the **NEC DECT Network Security License CD.**

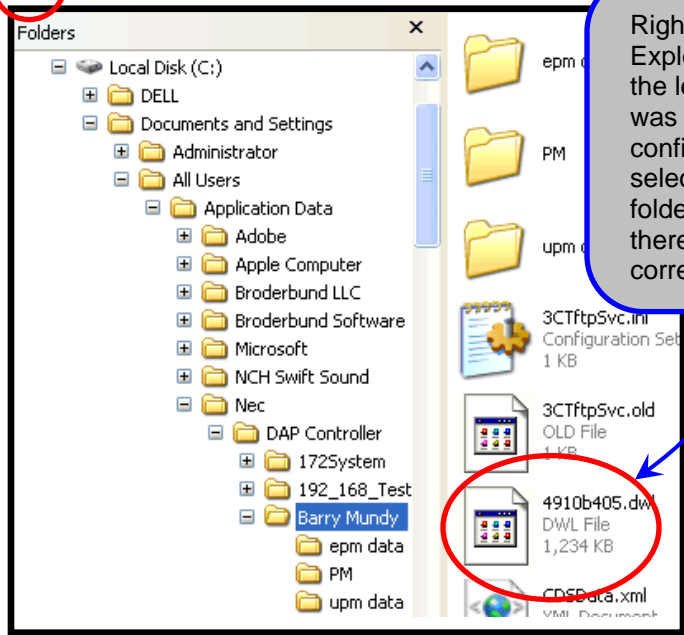
Place a green check in each of the 5 carrier boxes and change both the **Page Timer** and **Retry Value** to a setting of **03**

Click **Apply** button when done.

11.



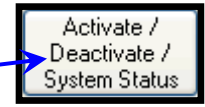
12.



Right click in Start and select Explore. Navigate as shown to the left and confirm the folder was created correctly. Also confirm that the firmware file selected in step 3 is also in this folder. If it is not you must copy it there for the application to work correctly.

Once files are confirmed click the **Activate/Deactivate/System Status** button in the left column of the Configurator.

13.



14.

System Status : Barry Mundy

Required IP settings : IP address PC : 10.10.10.226 Subnet mask : 255.255.255.0 Default gateway : 10.10.10.1

Services : Status :

DDS :	Service running (1.4.0.8)	<input type="checkbox"/>	<input type="button" value="▶"/>
PCR :	Service running (4.0.100.0)	<input type="checkbox"/>	<input type="button" value="▶"/>
TFTP Server :	Service running	<input type="checkbox"/>	<input type="button" value="▶"/>
DAP Manager :	Program running (4.0.100.0)	<input type="checkbox"/>	<input type="button" value="▶"/>
DHCP Server :	Program running (1.6.0.0)	<input type="checkbox"/>	<input type="button" value="▶"/>
DiagMonitor :	Program not running	<input type="checkbox"/>	<input type="button" value="▶"/>

Number of DAPs : 0

IP-DECT Configurator

Are you sure you want to start the DHCP server on this PC?

Select **Activate all** to start all the services necessary to bring the DAPs on line. Answer **Yes** to start the DHCP server.

15.

DAP Manager - 4.0.100.0 - Windows Internet

http://localhost/cds/

The **Access Points** must show **(1/1)** before you can continue. If it does not, wait until the DAP has a solid Red LED and then press the refresh button for the browser.

One of the Services started in Step 14 will be the **DAP Manager** which is accessed via a browser.

The **Add Number Range** option will show when the manager is opened. Enter in the range for the station numbers assigned in step 2.

DAP Manager - Barry Mundy

Main

- Subscriptions
- Access Points (1/1)
- Licences

Handsets	0/256
Multi-site handsets	0/256
G729	0/0
2 channel upgrades	5/0
Branch Office DAPs	0/255

Add Number Range

From : 1050

To : 1053

16.

Number	Status	PIN	RPN
1050	Enabled	3208	
1051	Free		
1052	Free		
1053	Free		

1

Subscriptions

Enable

Disable

Highlight the first station and then click on the Enable icon. A PIN will be generated.

17.

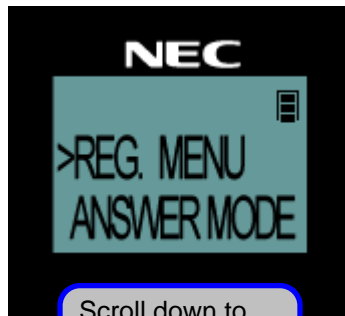
HANDSET PROGRAMMING



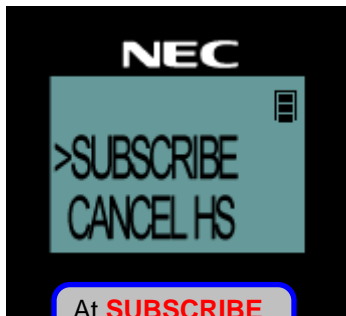
Power on a charged handset.



Press the **OK** key



Scroll down to **REG. MENU**. Press **OK**



At **SUBSCRIBE** press **OK**



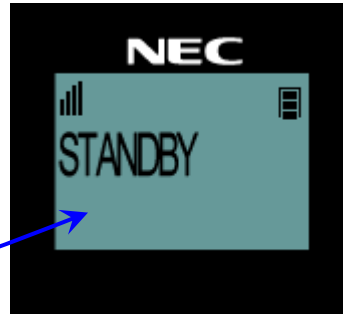
The **AC CODE** is the PIN generated by the **DAP Manager** from step 12.



The handset will then search for the installed DAP

18.

STANDBY indicates the handset is on line. Make test calls to and from the phone with a regular TDM station.



Handset Features







HANDSET NAME

The handset name is for display on the handset only and is not projected to other telephones in the SV8100. Press the **OK** key and scroll down to **HS NAME**. Press **OK**.



Enter the name via the keypad of the handset. By default the first letter will be upper case and those that follow lower case. Letters are on number keys 2~9. Other important entries are.....

- 0 Space
-  Back space/delete
-  Cursor right
-  Cursor left
-  Uppercase/Lowercase

Press **OK** when complete to save the name.

RING TONES

The handset ring tone allows for different tones on internal and external calls. Press the OK key and scroll down to **TONE SETUP**. Select **OK**.

There are 10 different tones to select from. As you scroll through each one it will play. Press OK to select.



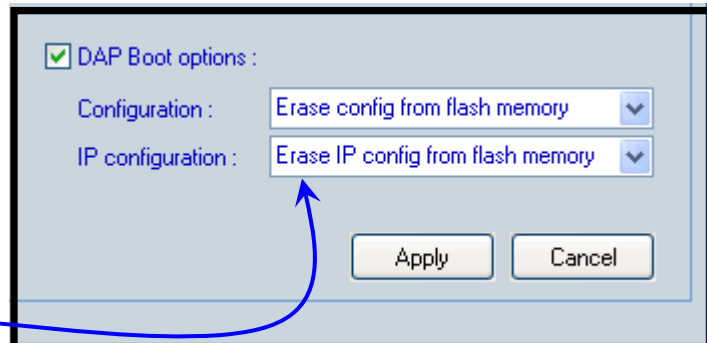
Within **TONE SETUP** you can select **INT.MELODY** for intercom calls and **EXT. MELODY** for trunk calls. Press **OK** to change.

Maintenance



CHANGING IP ADDRESS

To change the IP address of a previously installed DAP you must first create a new config file following steps 6 through 14. The IP address offered by the **DAP Configurator** DHCP must be the current IP address of the DAP. The only difference is the DAP Boot options in step 8 must be set to Erase. Allow the DAP to connect and wait till the operation LED is solid showing it is on line. Then unplug the DAP and the config will be lost and the DAP available to be assigned to a new IP address via yet another new customer config file.



If you have a DAP and do not know it's IP address you must use an Ethernet packet capture program such as **Wireshark** to see the DAP's IP address as it ARP's to the network when coming on line. Once you have the address you can create a config file re-offering that address with the DAP Boot options set to Erase.