



Release Notes

TM ***UNIVERGE NEAX® 2000 IPS*** ***Family of Products***

Business / CCIS / ISDN

3600 Series Software R11 Release

1. Overview	3
2. New Features	3
2.1 Automatic Daylight Savings Time	3
2.1.1 Benefits.....	3
2.1.2 Required Software and Hardware	3
2.2 Proprietary Multiline Terminal – Preset Dialing	3
2.2.1 Benefits.....	3
2.2.2 Required Software and Hardware	3
2.3 Multiple Language Display	4
2.3.1 Benefits.....	4
2.3.2 Required Software and Hardware	4
2.4 Single Digit Feature Access Codes.....	4
2.4.1 Benefits.....	4
2.4.2 Required Software and Hardware	4
3. Enhanced Features.....	5
3.1 SMDR – Station to Station SMDR.....	5
3.1.1 Benefits.....	5
3.1.2 Required Software and Hardware	5
3.2 CPN to Network – Calling Party Name on Outgoing Call.....	5
3.2.1 Benefits.....	5
3.2.2 Required Software and Hardware	5
3.3 Caller ID Display	6
3.3.1 Trunk Direct Appearance.....	6
3.3.2 Caller ID Before Answer	6
3.3.3 No Incoming CPN from PSTN.....	6
3.3.4 Restrict Caller ID to Dterm Display.....	6
3.3.5 Benefits.....	6
3.3.6 Required Software and Hardware	6
3.4 Flexible Line Key Assignment – One Touch Key	7
3.4.1 Benefits.....	7
3.4.2 Required Software and Hardware	7
3.5 Stack Dial – Redial	7
3.5.1 Benefits.....	7
3.5.2 Required Software and Hardware	7
3.6 Property Management System – Executed Task Print Out.....	8
3.6.1 Benefits.....	8
3.6.2 Required Software and Hardware	8
3.7 CCIS – Look Ahead Routing over IP-CCIS	8
3.7.1 Benefits.....	8
3.7.2 Required Software and Hardware	8
3.8 System Speed Dialing – Abbreviated Code	9
3.8.1 Benefits.....	9
3.8.2 Required Software and Hardware	9

- 3.9 Night Service (Attendant Night Transfer) – DID Support..... 9
 - 3.9.1 Benefits.....9
 - 3.9.2 Required Software and Hardware9
- 3.10 Remote PIM Over IP – Expansion 10
 - 3.10.1 Benefits.....10
 - 3.10.2 Required Software and Hardware10
- 3.11 Remote PIM Over IP – Functional Requirement 10
 - 3.11.1 Required Software and Hardware10
- 3.12 MP Program Download – Remote PIM Network 11
 - 3.12.1 Benefits.....12
 - 3.12.2 Required Software and Hardware12
- 3.13 Wireless – Elimination of UTAM regulation 13
 - 3.13.1 Benefits.....13
 - 3.13.2 Required Software and Hardware13
- 3.14 Maintenance Administration Terminal – MATWorX IPS..... 13
 - 3.14.1 Required Software and Hardware13
- 4. Software and Hardware..... 14**
- 5. Technical Documentation 15**

1. Overview

The *UNIVERGE* NEAX 2000 IPS provides new and enhanced features with the release of 3600 Series R11 Software. A short description of 3600 Series R11 Software new features and enhancements are outlined in the following pages. Please note that these release notes are provided as a quick reference of R11 enhancements and may not cover all service and operation conditions. The *UNIVERGE* NEAX 2000 IPS Features and Specifications document should be referenced for detailed information about each feature and enhancement before discussion and implementation.

2. New Features

2.1 Automatic Daylight Savings Time

This feature enables automatic switching between daylight saving time and standard time.

- Switching from standard time to daylight saving time: Advances the clock by one hour
- Switching from daylight saving time to standard time: Returns the clock advanced by one hour to the original state

2.1.1 Benefits

Ease of automatic switching plus the flexibility going forward to accommodate changes to State and or Federal guidelines and mandates.

2.1.2 Required Software and Hardware

- 64 PORT SYS SOFTWARE - 3600 SERIES R11 (FD)

2.2 Proprietary Multiline Terminal – Preset Dialing

When an outgoing call is originated from a Dterm, this feature enables dialing and editing of digits in an on-hook state. After the correct destination number has been entered the user can go off-hook via handset or speaker key to initiate the call. During dialing, digits are displayed on the LCD of the Dterm, BK soft-key is displayed for editing previously entered digits and the hold key can be used to delete a string of entered digits and start over.

2.2.1 Benefits

Enhances productivity by allowing the user to check the destination number during entry and make corrections reducing the number of misdialled calls.

2.2.2 Required Software and Hardware

- 64 PORT SYS SOFTWARE - 3600 SERIES R11 (FD)

2.3 Multiple Language Display

As business becomes more global, multiple languages are increasingly used in a single corporation. With this change there is an increasing need to change a single LCD display language to a different language to match each user's preference. The available languages are the same as those used on a system basis. The current languages supported are Japanese, English, French, Spanish, Portuguese, German, Italian, Dutch, Swedish and Danish.

2.3.1 Benefits

A different LCD display language can be specified for each Dterm, DtermIP and Attendant Console.

2.3.2 Required Software and Hardware

- 64 PORT SYS SOFTWARE - 3600 SERIES R11 (FD)

2.4 Single Digit Feature Access Codes

Currently Single Digit Feature Access during a busy or ring back to a terminal is a fixed number used to execute a service. This feature enables the digits used to access a particular feature to be changed by office data programming.

2.4.1 Benefits

By making the number used for Single Digit Feature Access programmable the customer can choose the digits used for a particular feature or disable a feature by choosing to omit the digits for particular feature.

2.4.2 Required Software and Hardware

- 64 PORT SYS SOFTWARE - 3600 SERIES R11 (FD)

3. Enhanced Features

3.1 SMDR – Station to Station SMDR

Based on the existing feature of SMDR output, this feature enables the output of an SMDR record for station-to-station calls (two-station connection). This output is based on the NEAX 2400 SMDR Format and can be interfaced from the MP via RS232C, MP via TCP/IP or AP00B MRC-F via RS232C. This feature can be enabled for a Single Line Telephone, Dterm, Dterm IP, PS, or Softphone.

3.1.1 Benefits

Adds an extra level of security by providing the ability to track station to station activity,

3.1.2 Required Software and Hardware

- 64 PORT SYS SOFTWARE - 3600 SERIES R11 (FD)
- SPN-AP00B MRC-F

3.2 CPN to Network – Calling Party Name on Outgoing Call

This feature sends calling party name information to the ISDN network when a call is placed from an extension within the IPS to the ISDN network via PRI. The service is available for Single Line Telephone, Dterm, DtermIP and PS.

The name information is not available to be relayed via a tandem connection from a CCIS/QSIG to the ISDN network.

3.2.1 Benefits

When the calling party name is provided to the ISDN network, the calling party can be easily identified.

3.2.2 Required Software and Hardware

- 64 PORT SYS SOFTWARE - 3600 SERIES R11 (FD)
- SPN-24PRTA-D (AP)

3.3 Caller ID Display

3.3.1 Trunk Direct Appearance

During termination of a Trunk to multiple Dterm's or during termination of a trunk to a sub-line, the Dterm LCD can display calling party information for the user to verify the caller ID before answering the call. However, only 8 Dterm's per tenant can be programmed to display the calling party information of a Trunk Direct Appearance.

3.3.2 Caller ID Before Answer

The Calling Party information for an incoming call before answer can now either flash or remain steady on the LCD display depending on office data programming. This change allows for the Calling Party information to be easily read and can be programmed on a per station basis.

3.3.3 No Incoming CPN from PSTN

When a Calling Party Number is not received from the PSTN the following options are now available:

- Connection to announcement
- Transfer to specified station
- Special termination (Ringing interval change, termination lamp change, etc.)
- Rejection
- Normal termination

3.3.4 Restrict Caller ID to Dterm Display

Provides the ability to block Caller ID to the LCD display of the Dterm via Class Of Service assignment while allowing Caller ID to Call Accounting, Voice Mail, MCI etc.

3.3.5 Benefits

The enhancements to Caller ID Display are designed to improve functionality and ease of use.

3.3.6 Required Software and Hardware

- 64 PORT SYS SOFTWARE - 3600 SERIES R11 (FD)
- SPN-24PRTA-D (AP)
- SPN-4BRTA-F (AP)

3.4 Flexible Line Key Assignment – One Touch Key

A previous enhancement allowed an Authorization Code Access + Authorization Code + Trunk Access Code/LCR Access Code + Telephone Number (not to exceed a total of 26 digits) to be programmed into a single One Touch-Key. This feature has been further enhanced to include Account Code and Forced Account Codes. Examples:

- Account Code Access Code + Account Code + Trunk Access Code/LCR Access Code + Telephone Number
- Forced Account Code Access Code + Forced Account Code + Trunk Access Code/ LCR Access Code + Telephone Number
- Authorization Code Access Code + Authorization code + Trunk Access Code/LCR Access Code + Telephone Number

Note: *Speed Dial Access Code + Speed Dial Bin number instead of Trunk Access code/LCR Access Code + Telephone Number can be used in the above three patterns*

3.4.1 Benefits

This can simplify dialing for applications that require an Authorization Code, Account Code or Forced Account Code before authorizing an outgoing call.

3.4.2 Required Software and Hardware

- 64 PORT SYS SOFTWARE - 3600 SERIES R11 (FD)

3.5 Stack Dial – Redial

This feature enables a Multiline Terminal or an Attendant Console to remember the numbers dialed in the preceding five calls, including the last number dialed. Enhancements to this feature include 1) second press of the redial key will suppress the special dial tone 2) extension of the time out after redial key is pressed from 6 to 16 seconds 3) Automatic Idle Return at time out. Both suppression of SPD and Automatic Idle Return are selectable by system data programming.

3.5.1 Benefits

The enhancements to Stack Dial-Redial are designed to improve functionality and ease of use.

3.5.2 Required Software and Hardware

- 64 PORT SYS SOFTWARE - 3600 SERIES R11 (FD)

3.6 Property Management System – Executed Task Print Out

An improvement in the hotel functions using the built in PMS of the MP is to allow the print out of an execution history of Automatic Wake Up, Do not Disturb, Room Cutoff, Check-in/Check-out service, Message Waiting and PMS connect or disconnect status.

In the following cases, a history can be output:

- When Automatic Wake Up is set/cancelled
- When Automatic Wake Up from an administrative station or console is set/canceled
- When Automatic Wake Up has been executed
- When Do Not Disturb is set/cancelled
- When Room Cutoff is set/canceled
- When Message Waiting is set/canceled
- When a check-in/checkout/checkout cancellation is performed from PMS
- When PBX-PMS communication is started/disconnected

3.6.1 Benefits

By preserving the setting and execution histories, these services can be checked and verified easily.

3.6.2 Required Software and Hardware

- 64 PORT SYS SOFTWARE - 3600 SERIES R11 (FD)
- SPN-AP00B MRC-F (SC-3480 IPS MRCA PROG-B1)

3.7 CCIS – Look Ahead Routing over IP-CCIS

In an peer-to-peer IP-CCIS network when the IP-PAD's at the destination office are all busy or not available, the destination office sends a message to the origination office, and the origination office then re-routes the call using an alternate route such as PSTN.

3.7.1 Benefits

Call continuance can take place if the IP-PAD channels at the destination office are busy.

3.7.2 Required Software and Hardware

- 64 PORT SYS SOFTWARE - 3600 SERIES R11 (FD)

3.8 System Speed Dialing – Abbreviated Code

In system speed dialing abbreviated dial codes are used to access memory slots where stored numbers are kept. The release of 3300 Series provided for 4 digit fixed length abbreviated codes to access 10,000 memory slots, with R11 software 1 through 8 digit variable dial codes are available to access memory slots

3.8.1 Benefits

The best way to explain the benefit is to provide an application example; Service Center takes calls from clients, the Service Center uses the clients account number to return calls to the client. The Service Center personnel would press system speed dial key plus dial account number 12345 which would be mapped to memory slot where the customer's number is stored and the system would dial 214-262-7000.

3.8.2 Required Software and Hardware

- 64 PORT SYS SOFTWARE - 3600 SERIES R11 (FD)

3.9 Night Service (Attendant Night Transfer) – DID Support

DID Attendant Night Transfer

With R11 an alternate transfer destination is available for DID calls Forwarded to an Attendant Console in night mode.

3.9.1 Benefits

If the Call Forward destination of a DID terminating extension is an Attendant Console and the Attendant console is placed in the night mode, the call can follow an alternate transfer destination such as VM etc.

3.9.2 Required Software and Hardware

- 64 PORT SYS SOFTWARE - 3600 SERIES R11 (FD)

3.10 Remote PIM Over IP – Expansion

Previously the maximum number of Remote Sites for the **UNIVERGE NEAX® 2000 IPS** was effectively 15. With the R11 release the number of Remote Sites is now up to 23 using the same maximums of 1020 ports and 64 FP/AP. To reach a total of 23 Remote Sites the **UNIVERGE NEAX® IPS DMR** must be used and each of the sites must be relatively small.

Software Level	R6.2	R8/R9/R10	R11
Number of Remote Sites	7	15	23

3.10.1 Benefits

Customers now have more flexibility with the expanded number of Remote Sites. Using to deploy one IPS with Remote PIM's to cover a regional area instead of multiple IPS systems to cover the same area.

3.10.2 Required Software and Hardware

- 64 PORT SYS SOFTWARE – 3600 SERIES R11 (FD)
- R-PIM 1 SITE LICENSE (1 per site up to 23)

3.11 Remote PIM Over IP – Functional Requirement

In previous versions of software it has been recommended, not required, that the software levels of the main and remote sites are the same software level. This recommendation was made to avoid possible feature and/or functionality issues while in normal operating mode and especially in survival mode. With the release of R11 software it is no longer a recommendation **it is a requirement that all sites in a Remote PIM network be the same level of software**. See the following table for operational status:

Main site	Remote site	Operation
R10 or earlier	R10 or earlier	Operational
R10 or earlier	R11 or later	Not operational Note
R11 or later	R10 or earlier	Not operational Note
R11 or later	R11 or later	Operational

Note: The Remote PIM will fail down load and fail to come online

3.11.1 Required Software and Hardware

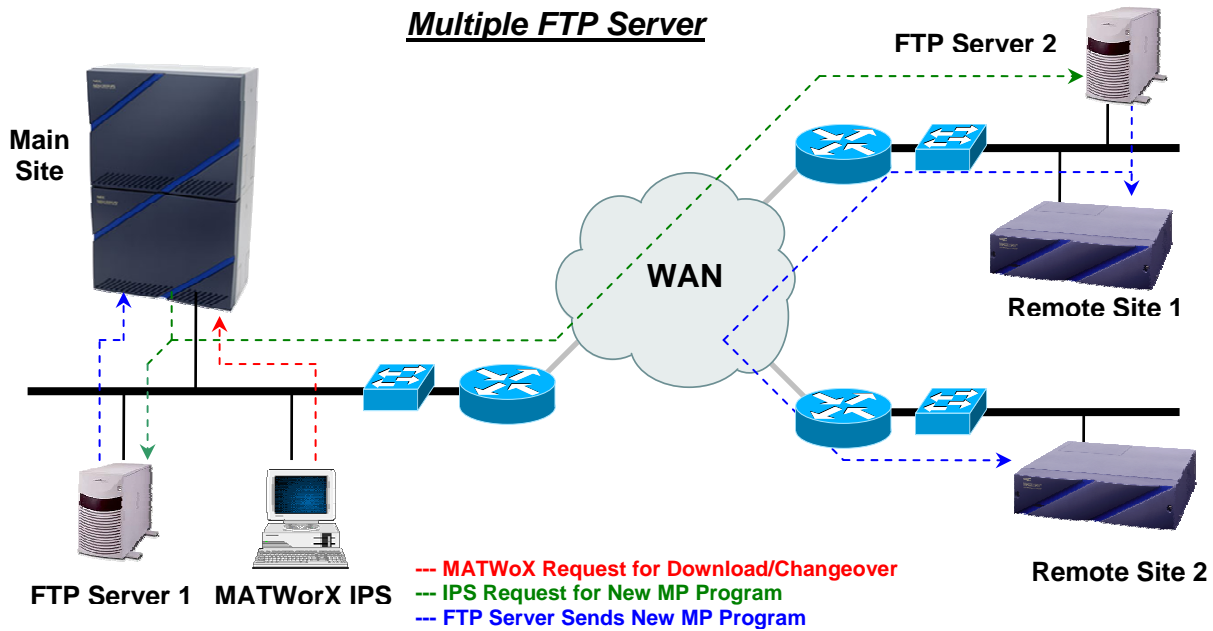
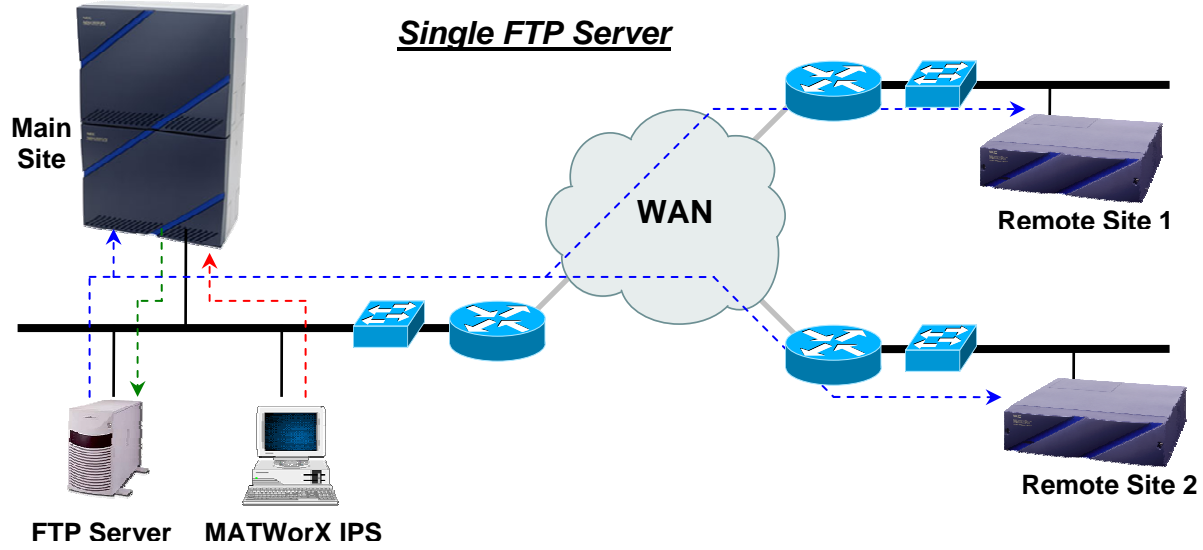
- 64 PORT SYS SOFTWARE - 3600 SERIES R11 (FD)

3.12 MP Program Download – Remote PIM Network

The first step to the MP Program Download was introduced during the **UNIVERGE NEAX®2000 IPS** release with the addition of the SPN-CP24C and SPN-CP31C. This feature was available in a Stand Alone mode only. The second step to MP Program Download adds this feature in a Remote PIM network over a LAN or WAN with one or more FTP servers. The steps used to perform the download are the same as those used in a stand alone environment. When using this feature in a network with one FTP server schedule downloads at least 7 minutes or more apart so that bandwidth and the number of connections to the FTP server are not exceeded.

For example:

- Download time of the Main site 18:00
- Download time of the Remote site 01 18:08
- Download time of the Remote site 02 18:16
- Changeover time for all sites 02:00



3.12.1 Benefits

This feature eliminates the long down times required to perform software upgrades and the addition of this feature to a Remote PIM network eliminates the need for a tech to travel to each site to perform the upgrades.

3.12.2 Required Software and Hardware

- SPN-CP24C or SPN-CP31C
- 64 PORT SYS SOFTWARE – 3600 SERIES R11 (FD)
- MATWorX IPS Version 11

3.13 Wireless – Elimination of UTAM regulation

When more Zone Transceivers (ZT) are needed for coverage or the system was down for more than eight hours, a technician needed to update the LVP server and input a new LVP and system code into the NEC PBX. As of in May 2005, all WIRED-FOR-WIRELESS[®] systems are no longer tied to a location, making this solution easier than ever to install and maintain. For more information see Dear Associate Letter WP05014da.pdf.

3.13.1 Benefits

The need for wireless site coordination and registration to the NEC LVP server (location verification process) is no longer required and the down for more than eight hours limitation has been eliminated.

3.13.2 Required Software and Hardware

- 64 PORT SYS SOFTWARE – 3500 SERIES R10 (FD)
- 64 PORT SYS SOFTWARE – 3600 SERIES R11 (FD)

3.14 Maintenance Administration Terminal – MATWorX IPS

- WLAN add-in - The wireless LAN add-in is used to set the wireless LAN server (SIP server) information and program the wireless LAN station information.
- System installation add-in - This add-in allows office data to be created by selecting an item on the wizard screen to enable sequential station, trunk and trunk route numbers to be input. When assigning stations the following data is set; trunk restriction class, service restriction class A&B, tenant number, service restriction class C, prime line, button data, and name display.
- MATWorX platform change to support Win2003 server
- Support for New Office Data

3.14.1 Required Software and Hardware

- 64 PORT SYS SOFTWARE - 3600 SERIES R11 (FD)
- MATWorX IPS Version 11

4. Software and Hardware

Part Number	Description	Comments
New Software		
150870	64 Port SYS Software 3600 Series R11 (FD)	R11 System Software
New Hardware		
153224	PN-4DLCT	Replaces PN-2DLCN
153104	PN-4DIDA	Replaces PN-4DITB
153221	PN-4RSTF-A	Replaces PN-4RSTF
153207	SPN-4RSTBA-B	Replaces SPN-4RSTB-B
153215	SPN-4RSTBA-911	Replaces SPN-4RSTB-911
153231	SPN-24PRTA-D	Replaces SPN-24PRTA-C
153258	SPN-AP00B MRC-F	Replaces SPN-AP00B MRC-E
153438	SPN-4BRTA-F	Replaces SPN-4BRTA-D

5. Technical Documentation

The following documents will be included in the NEAX2000 IPS Documentation CD:

Description
NEAX 2000 IPS System Manual
NEAX 2000 IPS Installation Manual
NEAX 2000 IPS Command Manual
NEAX 2000 IPS ISDN System Manual
NEAX 2000 IPS Q-SIG System Manual (PRT)
NEAX 2000 IPS CCIS System Manual
NEAX 2000 IPS Office Data Programming Manual
NEAX 2000 IPS Maintenance Manual
NEAX 2000 IPS WCS System Manual
NEAX 2000 IPS OAI SYS Manual
NEAX 2000 IPS MATWorX User Guide
NEAX 2000 IPS MATWorX Installation Guide
NEAX 2000 IPS DM Installation
NEAX 2000 IPS Feature Program
NEAX 2000 IPS Business/Hotel Features & Specifications
NEAX 2000 IPS CCIS Features & Specifications
NEAX 2000 IPS ISDN-QSIG Features & Specifications
NEAX 2000 IPS WCS Features & Specifications
NEAX 2000 IPS Upgrade Guide
NEAX 2000 IPS SMDR/MCI/PMS Specifications
NEAX IPS In-Skin Router Installation Guide
D ^{term} Assistant IPS User Guide