

## Release Notes

# ***UNIVERGE* NEAX 2000 IPS *Family of Products***

**Business / CCIS / IP / ISDN**

**3800 Series Software R13 Release**

<b>1. Overview</b> .....	<b>4</b>
1.1 2000 IPS Software CD.....	4
<b>2. New Business Features</b> .....	<b>5</b>
2.1 DML Expansion.....	5
2.1.1 Required Software and Hardware.....	5
2.2 IPS, DML and IP Remote PIM Network Expansion.....	6
2.2.1 Benefits.....	6
2.2.2 Required Software and Hardware.....	6
<b>3. Enhanced Features</b> .....	<b>7</b>
3.1 Automatic Hold Feature .....	7
3.1.1 Benefits.....	7
3.1.2 Required Software and Hardware.....	7
3.2 Automatic Wake-Up Call Enhancement.....	7
3.2.1 Benefits.....	7
3.2.2 Required Software and Hardware.....	7
3.3 Caller ID Display Enhancement .....	8
3.3.1 Benefits.....	8
3.3.2 Required Software and Hardware.....	8
3.4 Group Feature Key Enhancement .....	8
3.4.1 Required Software and Hardware.....	8
3.5 Line Key Conference by CFTC-A.....	9
3.5.1 Required Software and Hardware.....	9
3.6 Message Reminder Enhancement.....	9
3.6.1 Benefits.....	9
3.6.2 Required Software and Hardware.....	9
3.7 MW Indication on Dterm Multiple Line Keys.....	9
3.7.1 Benefits.....	9
3.7.2 Required Software and Hardware.....	9
3.8 PS Location Display .....	10
3.8.1 Required Software and Hardware.....	10
3.9 4BRT Auto TEI Assignment .....	10
3.9.1 Required Software and Hardware.....	10
3.10 Direct Trunk Appearance - ISDN BRI.....	11
3.10.1 Benefits.....	11
3.10.2 Required Software and Hardware.....	11
3.11 Centralized SMDR - CCIS for internal calls.....	11
3.11.1 Benefits.....	11
3.11.2 Required Software and Hardware.....	11
3.12 SMDR for Virtual Lines & Call Forwarding-Outside.....	11
3.12.1 Required Software and Hardware.....	11
3.13 R13 MATWorX Enhancements .....	12
3.13.1 Required Software and Hardware.....	12

<b>4. Software and Hardware.....</b>	<b>13</b>
<b>Technical Documentation .....</b>	<b>14</b>

## 1. Overview

The NEAX 2000 IPS continues to provide new and enhanced features with the release of 3800 series R13 software. 3800 series R13 software is being released with the new IPS Software CD. R13 software includes the new features DML Expansion, and Remote PIM Expansion which adds more PRI and Analog Caller ID trunks in the Remote PIM. In addition, there are enhancements on Caller ID, PS Location Display, CFTC-A Conference card, Message Reminder, Group Feature Key, Automatic Hold, etc. New boards are also introduced for RoHS compliance.

### 1.1 2000 IPS Software CD

Beginning with 3800 R13 Release System software and license options will be provided on CD only. The latest registration tool is required to load software. MatWorX shipping with R13 software includes the latest registration tool. The latest registration tool is also available for free download from NTAC-On-Line.



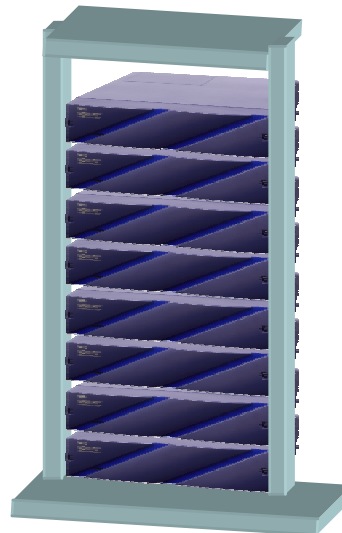
64 PORT SYS SOFTWARE - 3800 SERIES R13

## 2. New Business Features

### 2.1 DML Expansion

The IPS DM and DML have been combined to be positioned as an IP (2RU) solution providing similar system capacity of the UNIV NEAX 2000 IPS. The UNIV NEAX IPS DML has been engineered for optimal performance in a pure converged IP network; also it supports traditional analog and digital trunks. This DML expansion uses the same module that can be expanded to 8 modular chassis'. This expansion also supports more trunks, more IP PAD cards, more TDM stations, and can be a main site in an IP Remote PIM network. With the DML expansion there are only two new cards CPU and FP, all others cards are the same as IPS family.

**IPS DML**



#### **UNIV NEAX IPS DML**

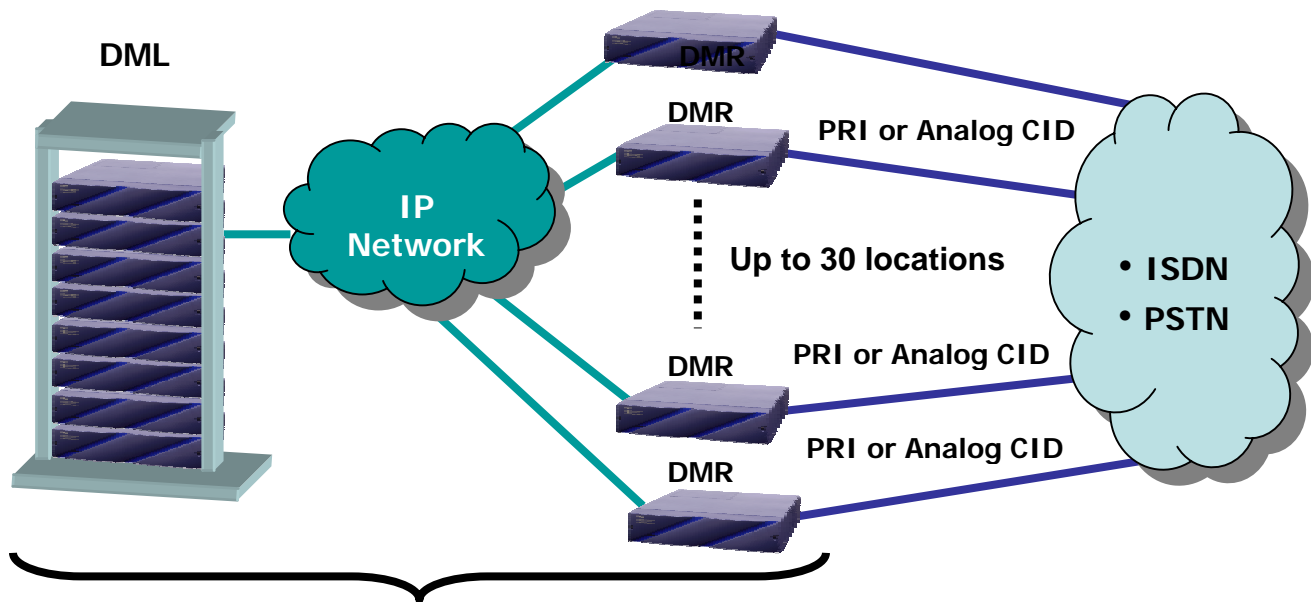
- 952 IP Stations
- 440 TDM Ports
- Network (CCIS/R-PIM)
- Stand Alone
- FTP Upgrade
- Same physical PIM size (2U size)
- Same 8-slots per module (56 ports)
- 19-inch Rack Mounted

#### **2.1.1 Required Software and Hardware**

- 64 PORT SYS SOFTWARE - 3800 SERIES R13
- PN-CP31-E (MP+BUS card)
- PN-CP33 (FP+BUS card)

## 2.2 IPS, DML and IP Remote PIM Network Expansion

The UNIV NEAX 2000 IPS, UNIV NEAX IPS DML, and the IP Remote PIM are being expanded to support 512 trunks, 32 ISDN PRI spans, in a Remote PIM network. The IPS and DML (main site) can still support up to 8 ISDN PRI spans, and with this expansion support up to 32 ISDN PRI's in the total Remote PIM network. Analog Caller ID Trunks are now supported in the Remote PIM. More trunks, more PRI spans, and Analog Caller ID trunks in remote locations enhance the network survivability.



**Max.1500 Ports (1020 IP/LT ports + 512 AP-TRK ports)**

- Trunk Expansion (256 → 512)
- PRI Expansion (8 → 32)
- Analog Caller ID Trunks in Remote PIM

### 2.2.1 Benefits

The Remote PIM network provides IP Users Can Log-in Anywhere in Network with IP Continuance, one common network data base and superior feature transparency and centralized applications.

- Line Appearances and BLF Across Network
- VM Soft-Keys and Live Record Across Network
- Hunt Groups, Call Park, Whisper Page Across Network
- Remote ACD Agents
- ....and more

### 2.2.2 Required Software and Hardware

- 64 PORT SYS SOFTWARE - 3800 SERIES R13
- ISDN PRI Software Key

## **3. Enhanced Features**

### **3.1 Automatic Hold Feature**

While in conversation on a line key user can push another ringing line previous line is automatically placed on hold and user can converse with new line. Previously, original conversation line would be dropped when user pushed ringing line key. With the automatic hold feature enabled the recall key is used to disconnect the line.

#### **3.1.1 Benefits**

A busy broker in conversation on one line can quickly answer a ringing line by pressing the line key; the previous line is automatically put on hold.

#### **3.1.2 Required Software and Hardware**

- 64 PORT SYS SOFTWARE - 3800 SERIES R13

### **3.2 Automatic Wake-Up Call Enhancement**

Previously the ringing of automatic wake-up was started within one minute of the specified time. With R13 automatic wake-up can be started exactly at the specified time. With automatic wake-up using exact time only 32 stations can ring simultaneously, ringing for the stations above 32 will start within one minute from the specified time.

#### **3.2.1 Benefits**

This allows for more accurate wake-up calls for the same specified time.

#### **3.2.2 Required Software and Hardware**

- 64 PORT SYS SOFTWARE - 3800 SERIES R13

### 3.3 Caller ID Display Enhancement

This R13 feature enhancement enables to display both Calling Party Number and Calling Party Name simultaneously for incoming ringing call and after answer for the duration of the call.

Before R13 IPS (e.g. Name Display)

<b>0:00:01</b>	<b>DDD 1234 NEC Brian</b>
----------------	-------------------------------

R13 IPS (e.g. Name Display)

<b>0:00:01</b>	<b>2142624321 NEC Brian</b>
----------------	---------------------------------

Supported Trunks: ISDN, Caller ID Trunk, T1-ANI, Q-SIG, CCIS

#### 3.3.1 Benefits

Digital and IP display terminal user can see both calling name and number for arriving trunk call and after answer for the duration of the call.

#### 3.3.2 Required Software and Hardware

- 64 PORT SYS SOFTWARE - 3800 SERIES R13

### 3.4 Group Feature Key Enhancement

Group member is not called if Call Forwarding-All or DND has been set. Previously the Group member was called if Call Forwarding-All or DND was set. System data can be set to provide either condition.

#### 3.4.1 Required Software and Hardware

- 64 PORT SYS SOFTWARE - 3800 SERIES R13



## 3.5 Line Key Conference by CFTC-A

Provides the ability to conference two or more line keys on a multiple line terminal using the new PN-CFTC-A (32 party conference card). The CFTC-A provides station controlled conference with 8-party. Previously only the PN-CFTB 6/10-party conference card could be used.

### 3.5.1 Required Software and Hardware

- 64 PORT SYS SOFTWARE - 3800 SERIES R13
- SPN-CFTC-A

## 3.6 Message Reminder Enhancement

With R13 software the date and time are displayed at message reminder search; an abandoned CCIS incoming call is stored in message reminder; and message reminder search can be done from an idle state.

### 3.6.1 Benefits

A user who is set message reminder can know when the message is made, even if the user searches the message reminder a few days after. Abandoned CCIS incoming calls can be stored in message reminder. Message reminder search can be operated without off-hook.

### 3.6.2 Required Software and Hardware

- 64 PORT SYS SOFTWARE - 3800 SERIES R13

## 3.7 MW Indication on Dterm Multiple Line Keys

This feature allows MW to be set to line key (blinking) and not to the top corner lamp. Programming is very flexible and can allow MW to the prime line to use the prime line key and corner lamp, while MW to other line keys only uses the line key and the corner lamp are dark. Previously any line key with MW set would also light the top corner lamp.

### 3.7.1 Benefits

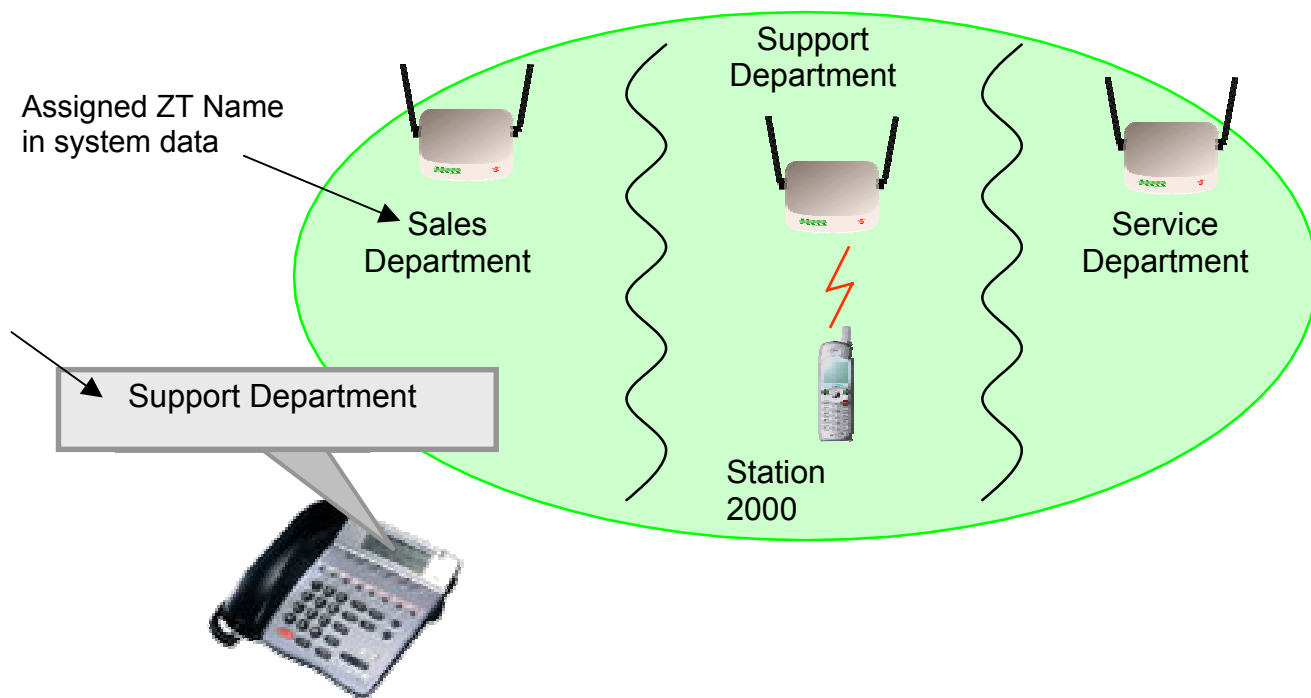
MW indication can be set for designated line keys on the terminal instead of the corner lamp. As an example 3 teachers share one phone, each has a separate line 200, 201 & 202. They can be notified they have VM by there line key flashing.

### 3.7.2 Required Software and Hardware

- 64 PORT SYS SOFTWARE - 3800 SERIES R13

## 3.8 PS Location Display

With R13 a PS station is able to dial an access code or press feature key + PS station number; PS location is displayed on the Dterm LCD.



PS location is displayed on Dterm LCD

### 3.8.1 Required Software and Hardware

- 64 PORT SYS SOFTWARE - 3800 SERIES R13

## 3.9 4BRT Auto TEI Assignment

Provides dynamic assignment of TEI's 64-126. Previously numbers could only be pre-assigned TEI's 0-63. The SPN-4BRTA-H (AP) with SC-3687 IPS BRT PROG-H1 firmware will support both TEI's 0-63 and TEI's 64-126.

### 3.9.1 Required Software and Hardware

- 64 PORT SYS SOFTWARE - 3800 SERIES R13
- SPN-4BRTA-H (AP)

### **3.10 Direct Trunk Appearance - ISDN BRI**

R13 provides the ability to assign ISDN BRI trunks to line keys of a multiple line terminal. Operation is the same as analog trunk appearance. Line pre-select can be used BRI line appearance.

#### **3.10.1 Benefits**

Users have the ability use trunk line appearance even on ISDN BRI trunks. This improves services, and provides more choices for user operation.

#### **3.10.2 Required Software and Hardware**

- 64 PORT SYS SOFTWARE - 3800 SERIES R13
- SPN-4BRTA-H (AP)

### **3.11 Centralized SMDR - CCIS for internal calls**

In R11 we released SMDR output for station-to-station calls in stand alone system. With R13, SMDR of station-to-station calling can be provided via CCIS centralized SMDR. This is available for 2000 to 2400 and 2000 to 2000. The MP SMDR output (RS or LAN) is used in the remote/local office and AP00B MRC-H or M606A is required in the main/center office for this feature. Both the standard KB and the advanced KJ format can be used.

#### **3.11.1 Benefits**

Now allows for SMDR reports for station-to-station calls with a CCIS network.

#### **3.11.2 Required Software and Hardware**

- 64 PORT SYS SOFTWARE - 3800 SERIES R13
- PN-AP00B MRC-H (AP)
- PN-M606A

### **3.12 SMDR for Virtual Lines & Call Forwarding-Outside**

R13 provides the ability for SMDR output of virtual station number to Calling Number and virtual station to Called Number. Also SMDR Output when Call Forwarding-Outside is originated from a virtual station.

#### **3.12.1 Required Software and Hardware**

- 64 PORT SYS SOFTWARE - 3800 SERIES R13

### **3.13R13 MATWorX Enhancements**

Below is a list of MATWorX Add-Ins, which is enhanced to support the R13 related features.

- Office Data Programming Tool
- Enhancement of MP Program Download (FTP) Add-In (MP Program download to remote sites)
- Group Add-in improvement
- High-speed Office Data Listup
- New office data

#### **3.13.1 Required Software and Hardware**

- MATWorX IPS Ver.13 or later version

## 4. Software and Hardware

Part Number	Description	Comments
<b>New Software</b>		
153336	64 Port Sys Software - 3800 Series R13	3800 R13 Generic Software
153441	NEAX 2000 IPS Software (CD)	CD-ROM for Generic and Options Keys.
153802	ISDN PRI Software Key	Provides ISDN PRI Licenses in increments of one up to 32 links above 5. (5 licenses come with generic software)
<b>New Hardware</b>		
153655	SPN-CP31E (CPU)	Main Processor for IPS DML 440 Port System
153491	PZ-M697	ETHER and BUS card for IPS DML 440 Port System. Mounted on SPN-CP31E MP (UA)
153427	PN-CP33	Firmware Processor (FP) card for IPS DML 440 Port Mounted in Module 2,4,6
151057	48-TW-1.3 CONN CA	BUS Cable for IPS DML 440 Port system. Connected between SPN-CP31E and PN-CP33 or between PN-CP33 and PN-CP33
153123	SPN-DTA (CCT)-B (AP)	CCIS Trunk Interface. Can be used as CCT (channels + CCH) or just as CCH.
153488	SPN-AP00B MRC-H (AP)	Application Package for SMDR/ CCIS centralized SMDR/MCI.
153489	SPN-4BRTA-H (AP)	BRI Trunk card (4 TRK). Automatic TEI Support.
153208	SPN-2ILCC	2-line ISDN Line Circuit Card. D-channel handler for ILC is included.
151056	RS PRT-15S CA-C	RS-232C CABLE for PN-AP00B Printer.

## Technical Documentation

Description	Revision
NEAX 2000 IPS Business/Hotel Features & Specifications	10.0
NEAX 2000 IPS CCIS Features & Specifications	10.0
NEAX 2000 IPS ISDN-QSIG Features & Specifications	10.0
NEAX 2000 WCS Features & Specifications	10.0
NEAX IPSDM Hardware Installation Guide (For 440 port)	1.0
NEAX 2000 IPS Installation Manual	3.0
NEAX 2000 IPS Command Manual	3.0
NEAX 2000 IPS Feature Programming Manual	3.0
NEAX 2000 IPS Office Data Programming Manual	4.0
NEAX 2000 IPS System Manual	3.0
NEAX 2000 IPS CCIS System Manual	3.0
NEAX 2000 IPS ISDN System Manual	3.0
NEAX 2000 IPS OAI System Manual	4.0
NEAX 2000 IPS Q-SIG System Manual (PRT)	3.0
NEAX 2000 IPS WCS System Manual	4.0
NEAX 2000 IPS WLAN System Manual	3.0
NEAX 2000 IPS Software Upgrade Guide	3.0
NEAX 2000 IPS MATWorX® User Guide	3.0
NEAX 2000 IPS MATWorX Installation Guide	3.0