

## Release Notes

# ***UNIVERGE***® SV8300

## **R4.0 Software Release**

- 1. Overview ..... 3**
- 2. New Features to R4.0 ..... 3**
  - 2.1 Dual CPU ..... 3
    - 2.1.1 Required Software and Hardware..... 3
  - 2.2 SP350 Soft-Phone ..... 4
    - 2.2.1 Required Software and Hardware..... 4
- 3. Enhanced Features to R4.0..... 5**
  - 3.1 SIP Trunk Enhancements ..... 5
    - 3.1.1 Required Software and Hardware..... 5
  - 3.2 PC Pro Enhancements..... 6
- Software and Hardware ..... 8**
- Technical Documentation ..... 11**

## 1. Overview

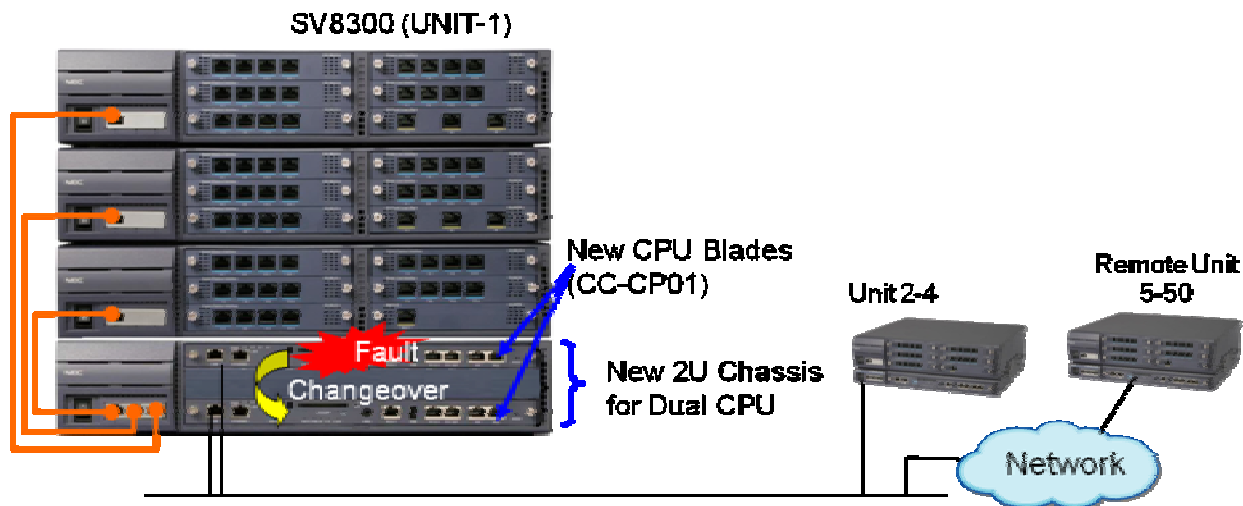
The **UNIVERGE® SV8300** continues to provide new and enhanced features with the release of 8300 R4.0 series software. R4.0 revision software included new features Dual CPU, and SP350 Soft-Phone. Also includes enhancements to SIP Trunk and PC Pro.

## 2. New Features to R4.0

### 2.1 Dual CPU

With R4.0 version software the SV8300 provides redundant system with two CPU blades mounted on one system. One CPU runs as active and another runs as standby. The CPU with redundancy enables the SV8300 to uplift the system reliability. If a fault occurs there will be a change over from active CPU to standby CPU (Cold Standby). So when a failure is detected in the active CPU the standby CPU restarts initialization and changes into active CPU.

A new 2U CP chassis is used to house both CPUs. There is no difference in features between the two CPU blades one is the primary and the other is backup.



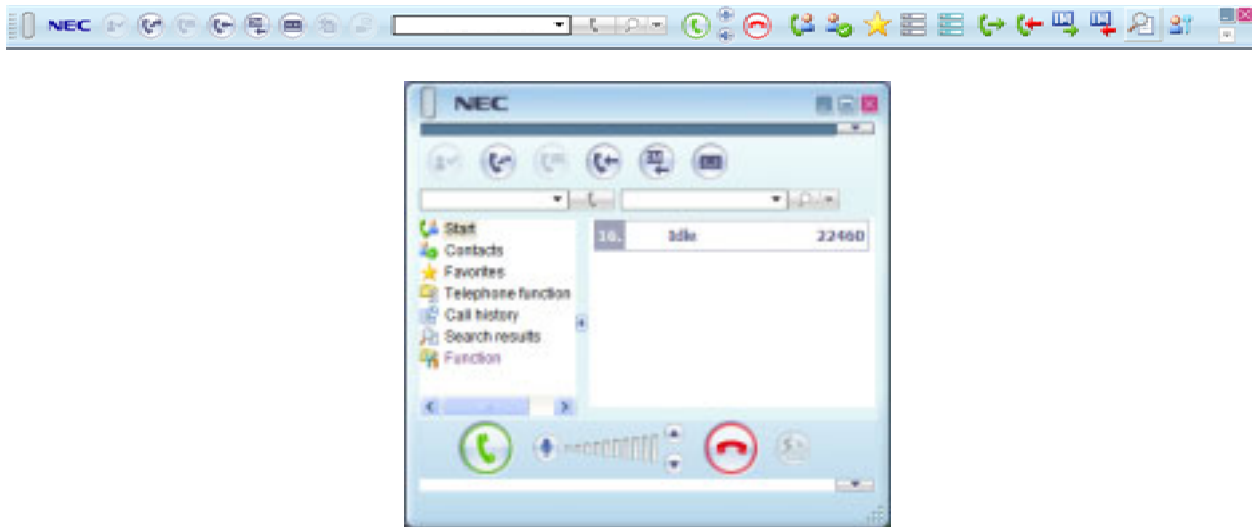
- Dual CPU configuration is available in only UNIT 1.
- System data, user data, billing data, and licenses are backed up from active CPU to standby CPU every hour.
- VoIP-DB and VM21-DB have to be mounted on active/standby CPU blades.

#### 2.1.1 Required Software and Hardware

- R4.0 Version License Software
- DUAL CPU System License
- Dual CPU Package (Basic / SIP)

## 2.2 SP350 Soft-Phone

With R4.0 version software the SV8300 accommodates the SP350 Soft-Phone as a new communication tool for the IP system. The SP350 provides attractive service features such as video conference, or document sharing, in addition to the existing phone services. A maximum of 1536 of SP350 clients can be accommodated per system. Configuration conditions for the SP350 are the same as existing SP30 or other Dterms.



- Presence feature allows more flexible communication with the co-workers according to the status of the party whom the user is trying to reach. For example, when the party is on the desk, the user makes a call, when the party is busy or away, the user send an IM, or when away sends an email. OW5000 (Presence server) is required for Presence.
- Video Meeting, Chat, File Transfer, and Instant Message features are only available between SV8300 systems.



### 2.2.1 Required Software and Hardware

- R4.0 Version License Software
- Soft-Phone license
- System Port Capacity license
- SP350 software CD

## 3. Enhanced Features to R4.0

### 3.1 SIP Trunk Enhancements

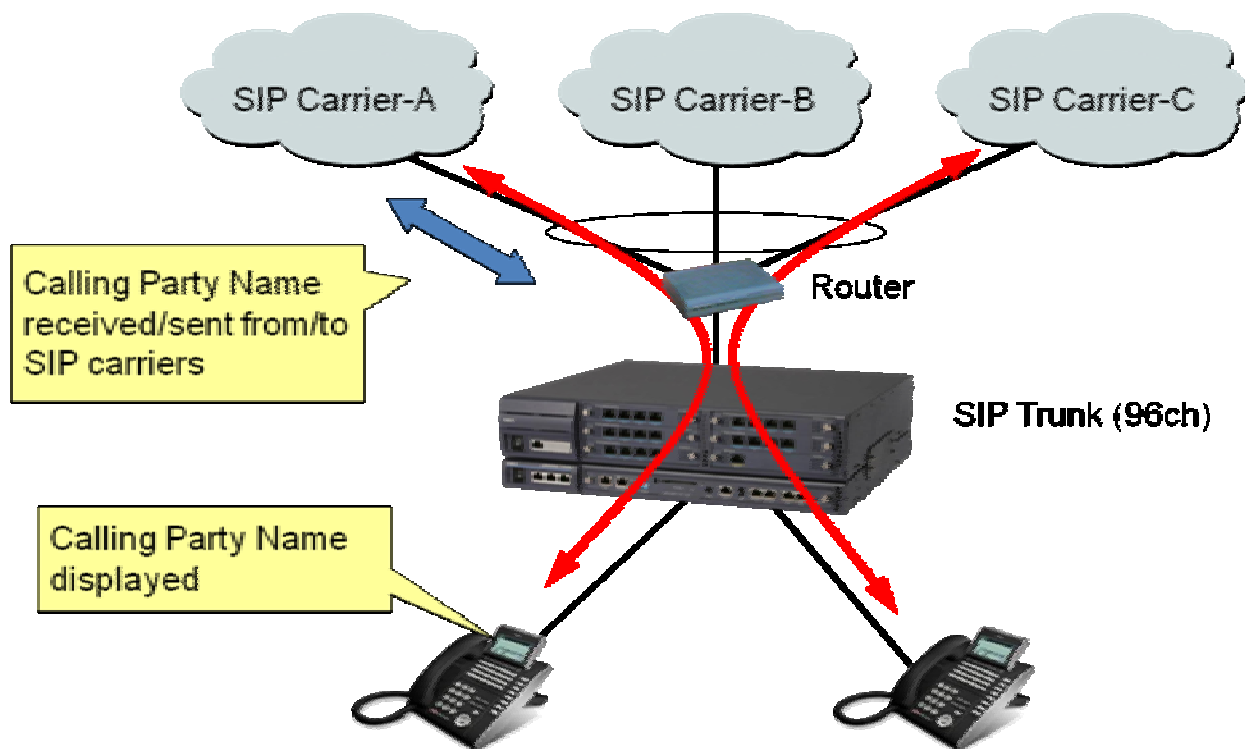
With R4.0 version software the SV8300 continues to provide enhancements to service features for SIP Trunks.

#### **Calling Party Name (Send and Receive)**

Not only calling number but also calling name of incoming calls from SIP trunks can be displayed. For outgoing calls on SIP trunks the calling name information can be attached to the calling number. When using SIP Trunks that support name display, it is possible to make the name information displayed on the calling party terminal.

#### **Multi-Carrier Connection**

This enhancement allows one system to use more than one SIP carrier. The SV8300 will support a maximum of four SIP Carriers (NAT Global address for each carrier). When the SV8300 cannot originate calls due to carrier trouble, the call can be rerouted. It is also possible to specify a secondary server in the same carrier.



#### 3.1.1 Required Software and Hardware

- R4.0 Version License Software
- SIP Trunk System License
- SIP Trunk Channel License
- Certified SIP Carrier

## 3.2 PC Pro Enhancements

SV8300 continues to provide enhancements to PC Pro R4 (4.0.0.120) such as Status Display, Firmware Update, System Check and Report, and Windows 7 (64 BIT) support.

### Status Display

Port status/Lamp status is a feature to display statuses of blades in operation in the SV8300.

- List of Busy Trunks and Stations using the Trunks

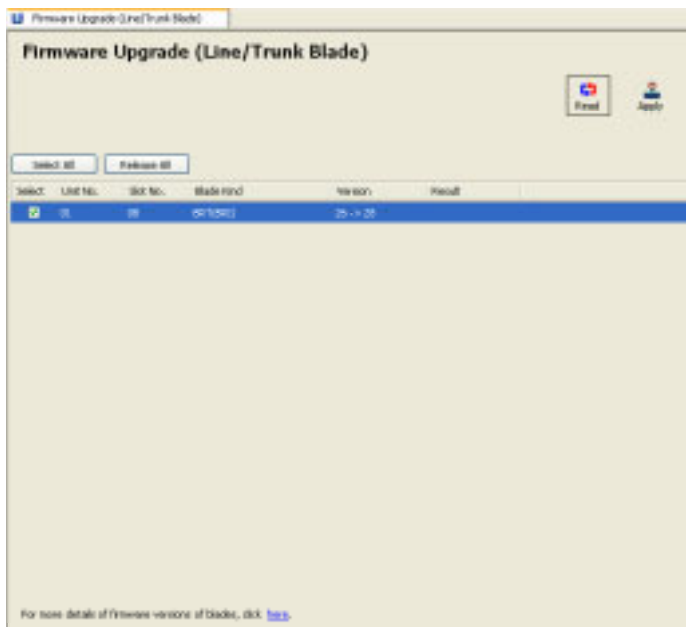
Trunk Number	Trunk Type	UNIT	SLOT	CKT	Station using the Trunk	Station Number
000	COT	01	01	01	Station	3102
001	COT	01	01	02	Virtual Station	4000

- List of Stations occupied

Station Number	Station Type	UNIT	SLOT	CKT
3102	Single Line	01	01	01
3103	Single Line	01	01	02
4100	DT700 series			

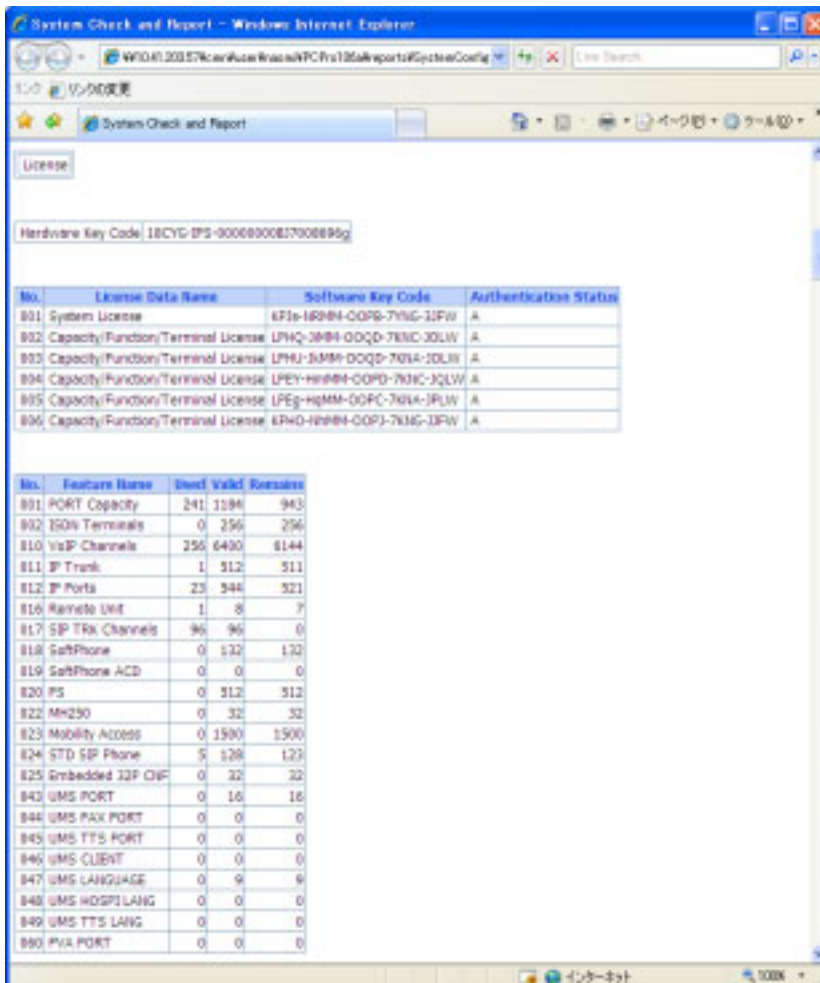
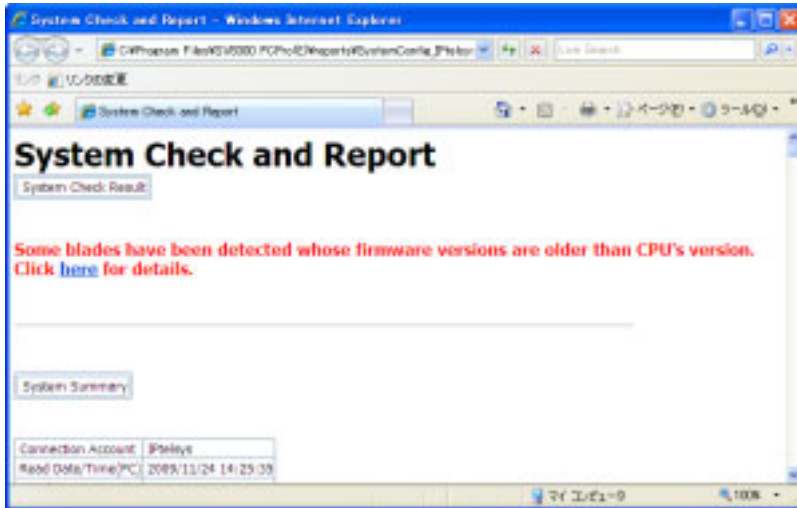
### Firmware Mass Update

Automatically detect differences between Generic Software and firmware versions on blades and update all at once. The blades whose firmware must be upgraded are listed and the user can smoothly move to the upgrade service.



## System Check and Report

Display system information, port information, and detailed port information (firmware version of each blade, and firmware version of CPU). Also detects duplicate IP address and blades which requires firmware upgrade.



## Software and Hardware

Part Number	Description	Comments
<b>Software - New and Enhancements</b>		
670961	LS-SYS-R4-LIC	R4.0 Version License
670867	LS-SYS-DUAL CPU-LIC	System license for Dual CPU (one per system)
670761	LS-EXT-SP-LIC	SP30/SP350 Soft-Phone License One per Soft-Phone also requires system port license per each
670762	LS-EXT-SP-ACD-LIC	SP30/SP350-ACD Soft-Phone License One per ACD Soft-Phone also requires system port license per each
670764	LS-TRK-SIP-LIC	SIP Trunk Channel License One required per each SIP Trunk channel also requires system port license for each channel
670775	LS-FEA-SIP-T-LIC	SIP Trunk Feature License (one per system)
670833	AS System PC APP-CD	SV8300 PC Pro (R4 4.0.0.120) MPC-SC3934 CYG-IPS BSC PROG-E1
<b>Packages / Hardware - New and Enhancements</b>		
670154	SV8300 DUAL SIP BASIC PKG	SV8300 Dual SIP Basic Package for Dual CPU in a single chassis and can be a complete IP configuration. Package includes: SCC-CP01 MP-US (670151) SCC-CP01 MP-US (670151) CHS2U-US(D) SN1764 CYGME AC CORD CHS BLANK SLOT COVER KIT (BUS) TM-166-8(#5836) BUMPER FRONT COVER LED LENS PZ-128IPLA (VoIP daughter board) (670106) PZ-128IPLA (VoIP daughter board) (670106)



Part Number	Description	Comments
670155	SV8300 DUAL SIP BASIC PLUS PKG	SV8300 Dual SIP Basic Plus Package for Dual CPU that combines IP and TDM for all types of configurations. Package includes: SCC-CP01 MP-US (670151) SCC-CP01 MP-US (670151) CHS2U-US(D) (670150) SN1764 CYGME AC CORD CHS BLANK SLOT COVER KIT (BUS) TM-166-8(#5836) BUMPER FRONT COVER LED LENS CHS2U-US Chassis (670015) SN1750 CYGMA AC CORD for US CHS2U BLANK SLOT COVER KIT(BUS) CHS2U BLANK SLOT COVER KIT PZ-BS10 (BUS) (670100) PZ-BS11 (BUS) (670101) PZ-128IPLA (VoIP daughter board) (670106) PZ-128IPLA (VoIP daughter board) (670106)
670156	SV8300 DUAL BASIC PLUS PKG	SV8300 Dual Basic Plus Package for Dual CPU in single unit configurations that are installed with TDM only. Package includes: SCC-CP01 MP-US (670151) SCC-CP01 MP-US (670151) CHS2U-US(D) (670150) SN1764 CYGME AC CORD CHS BLANK SLOT COVER KIT (BUS) TM-166-8(#5836) BUMPER FRONT COVER LED LENS CHS2U-US Chassis (670015) SN1750 CYGMA AC CORD for US CHS2U BLANK SLOT COVER KIT(BUS) CHS2U BLANK SLOT COVER KIT PZ-BS10 (BUS) (670100) PZ-BS11 (BUS) (670101)
670151	SCC-CP01 MP-US	Main processor blade for Dual CPU configuration. Mounted only in CHS2U-US(D) chassis for UNIT 01. Functions are the same as the CC-CP00

Part Number	Description	Comments
670150	CHS2U-US(D)	CHS2U-US(D) chassis for Dual CPU Included with chassis: SN1764 CYGME AC CORD CHS BLANK SLOT COVER KIT (BUS) TM-166-8(#5836) BUMPER FRONT COVER LED LENS
670604	CHS2U-(D) INT BATT KIT	CHS2U-(D) INT BATT KIT includes: - CHS2U-(D) BATT MTG KIT - CHSGW SMALL BATT SET
670152	CHS2U(D) BATT MTG KIT	Internal Mounting Kit for CHS2U(D) chassis for Dual CPU
670511	CHSGW SMALL BATT SET	Internal Battery Set: (Qty2) Battery Lead Acid, 12V 0.8Ah JST connection
670153	CHS2U(D) FAN BOX SET	FAN Unit for Dual CPU chassis (for maintenance)

**NOTE:** These release notes are provided as a quick reference of R4.0 enhancements and may not cover all service and operation conditions. The UNIVERGE® SV8300 Features and Specifications document should be referenced for detailed information about each feature and enhancement before discussion and implementation.

## Technical Documentation

Description	Revision
SV8300 Hardware Manual	3.0
SV8300 Command Manual	5.0
SV8300 Programming Manual	5.0
SV8300 Networking Manual	5.0
SV8300 System Manual	5.0
SV8300 PC Programming Manual	4.0
SV8300 System Data Programming	4.0
SV8300 System Maintenance Manual	4.0
SV8300 Business/Hotel Feature & Specification	4.0
SV8300 SMDR-MCI-PMS Specification	3.0
SV8300 ISDN/Q-SIG Feature & Specification	4.0
SV8300 CCIS Feature & Specification	4.0
SV8300 WCS Feature & Specification	4.0
UM8000 Installation Guide	2.0
InRouter Configuration Guide	1.0
PoE Gigabit Switch Configuration Guide	2.0
SV8300 Parts & Price Book	5.0